



PIC32 Microcontroller Families
With USB, CAN and Ethernet

PIC[®]32[®]

PIC[®] MCU to the power of 32

Performance Leading **PIC³²** Microcontroller

Building on the heritage of Microchip Technology's world-leading 8- and 16-bit PIC[®] microcontrollers, the PIC32 family delivers 32-bit performance and more memory to solve increasingly complex embedded system design challenges.

High Performance & Memory

Power your RTOS, Touch Screens and Complex Applications

- 80 MHz, 1.56 DMIPS/MHz MIPS M4K Core
- 512K Flash with pre-fetch cache
- 128K RAM for data and program execution
- Fast interrupts and context switch

Fast, Easy Development

Shorten Your Project Design Cycle

- Free Graphics, Touch Sense and file system source code
- Broad Third Party ecosystem
- \$49.99 starter kit with free C compiler
- Hardware trace for less than \$80

Industry Leading Compatibility

Create Scalable Products in a Consistent Environment

- Common MPLAB[®] development tools
- Pin & peripheral compatible with 16-bit PIC MCUs
- Common software stacks across MCUs
- Common tools environment ~600 PIC MCUs

More Design Options

Simplify Your System Design Through Integration

- Extensive analog and digital peripherals
- USB Host/Device/OTG, Dual CAN, 10/100 Ethernet
- Up to 16 DMA channels
- 16-bit parallel master port

FREE Microchip Software Libraries

www.microchip.com/pic32libraries

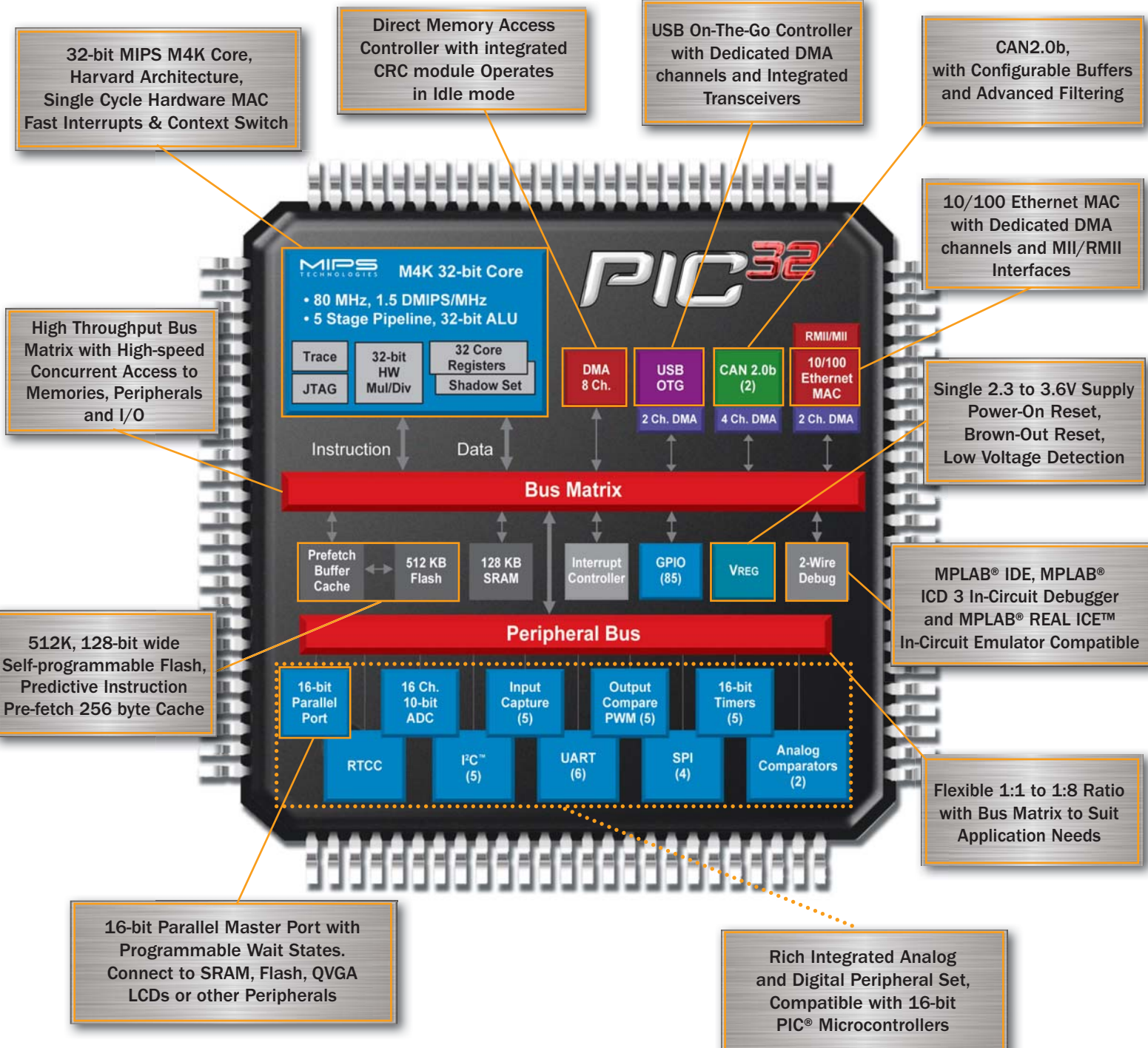
USB	USB Host, Device, On-the-Go with Class Drivers
HMI	Microchip Graphics Library Capacitive Touch Software
CAN	CAN API Library for PIC32 with Integrated CAN Controller (in compiler) Standalone CAN Library - includes support for MCP2515
Connectivity	Microchip TCP/IP with SSL and BSD IrDA [®] Stack* ZigBee [®] Pro Protocol Stack** ZigBee [®] Smart Energy Profile Suite** MiWi [™] Protocol Stack for 802.15.4 Networks
Audio and Speech	Audio Library for PIC32MX: Speex, ADPCM and WAV
Encryption	AES 128-, 196- and 256-bit Encryption & Decryption Library Public Key Cryptography Library (RSA)
Basic Libraries	16- and 32-bit File System Libraries FAT File System Library – FatFs DSP Library (located in MPLAB C compiler for PIC32) Math Library (located in MPLAB C compiler for PIC32) Peripheral Library (located in MPLAB C compiler for PIC32) EEPROM Emulation IEC 60730 Class B Software
Boot Loader	Serial Port Boot Loader USB Host Boot Loader**

* Contact Microchip for availability.

** Software planned for future - get the latest updates at www.microchip.com/pic32libraries.

www.microchip.com/PIC32

Inside the PIC³² Microcontroller



Package Options

64-pin			100-pin		
64-lead TQFP 10 x 10 (PT)	64-lead QFN 9 x 9 (MR)	100-lead TQFP 12 x 12 (PT)	100-lead TQFP 14 x 14 (PF)	100-ball BGA 10 x 10 (BG)	

Developing with the PIC³² Microcontroller

Microchip is the only silicon vendor with a full 8-, 16- and 32-bit microcontroller portfolio supported by a unified development environment. The MPLAB[®] IDE is free and easy to use.



PIC32 Starter Kits

Getting started is easy with any of the fully integrated PIC32 Starter Kits featuring simple installation, getting started tutorial and PIC32 starter board with easy USB connection to your PC. The Starter Kits include:

- MPLAB IDE and MPLAB C32 C Compiler†
- PIC32 Starter Board with Integrated Programmer and Debugger
- Code Examples, Documentation, Tutorials and Sample Projects, Optional I/O Expansion board allows signal breakouts and connections for PICtail™ Plus Daughter Cards

†Lite version has **no code size limit** and full optimizations. After 60 days some optimizations are disabled.

PIC32 Development Tools

Choose a Platform:

Starter Kit Platform

PIC32 Starter Kit (DM320001)



PIC32 USB Starter Kit II (DM320003-2)



PIC32 Ethernet Starter Kit (DM320004)



OPTIONAL

PIC32 I/O Expansion Board (DM320002)

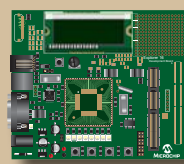


Multimedia Expansion Board (DM320005)

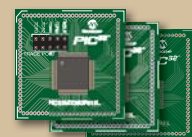


OR Explorer 16 Platform

Explorer 16 Development Board (DM240001)



PIC32 Plug-in Modules (MA320001) (MA320002) (MA320003)



AND

MPLAB[®] ICD 3 In-Circuit Debugger (DV164035)



MPLAB[®] REAL ICE™ In-Circuit Emulation System (DV244005)



OR

PICtail™ Boards Common to Both Development Platforms

Graphics Daughter Board with 3.2" Display Kit (AC164127-3)



ECAN/LIN Daughter Board (AC164130)



MRF24WB0MA Wi-Fi Daughter Board (AC164136-4)



MRF24J40MA 2.4 GHz RF Card (AC164134)



... and many more!

PIC32 Product Family

Device	Flash KB + Boot Flash	SRAM KB	Pin Count	MHz	SPI	I ² C™	UARTs	DMA Channels General/Dedicated	USB	10/100 Ethernet	CAN 2.0b	IC/OC/PWM	10-bit ADC 1 Msps	Analog Comparator	Timers 16b/32b	RTCC	Parallel Master Port	JTAG Program, Debug, Boundary Scan
PIC32MX320F032H	32 + 12	8	64	40	2	2	2	0/0	N	N	N	5/5/5	16 ch	2	5/1	1	Y	Y
PIC32MX320F064H	64 + 12	16	64															
PIC32MX320F064L			80															
PIC32MX320F128H	128 + 12	16	64															
PIC32MX320F128L			100															
PIC32MX340F128H			32	64														
PIC32MX340F128L				100														
PIC32MX340F256H	256 + 12	32	64															
PIC32MX360F256L			100															
PIC32MX340F512H	512 + 12	32	64															
PIC32MX360F512L			100															
PIC32MX420F032H	32 + 12	8	64	40	1	2	2	0/2	Y	N	N	5/5/5	16 ch	2	5/1	1	Y	Y
PIC32MX440F128H	128 + 12	32	64	80	1													
PIC32MX440F128L			100	2														
PIC32MX440F256H	256 + 12	32	64	80	1													
PIC32MX460F256L			100	2														
PIC32MX440F512H	512 + 12	32	64	80	1													
PIC32MX460F512L			100	2														
PIC32MX534F064H	64+12	16	64	80	3													
PIC32MX534F064L			100	4	5													
PIC32MX564F064H		32	64	80	3	4												
PIC32MX564F064L			100	4	5													
PIC32MX564F128H	128+12	32	64	80	3	4	6	Y	N	1	5/5/5	16 ch	2	5/1	1	Y	Y	
PIC32MX564F128L			100	4	5													
PIC32MX575F256H	256 + 12	64	64	80	3	4	8/4	Y	Y	N	5/5/5	16 ch	2	5/1	1	Y	Y	
PIC32MX575F256L			100	4	5													
PIC32MX575F512H	512 + 12	64	64	80	3	4	6	Y	Y	N	5/5/5	16 ch	2	5/1	1	Y	Y	
PIC32MX575F512L			100	4	5													
PIC32MX664F064H	64+12	32	64	80	3	4	4/4	Y	Y	N	5/5/5	16 ch	2	5/1	1	Y	Y	
PIC32MX664F064L			100	4	5													
PIC32MX664F128H	128+12	32	64	80	3	4	6	Y	Y	N	5/5/5	16 ch	2	5/1	1	Y	Y	
PIC32MX664F128L			100	4	5													
PIC32MX675F256H	256 + 12	64	64	80	3	4	8/4	Y	Y	N	5/5/5	16 ch	2	5/1	1	Y	Y	
PIC32MX675F256L			100	4	5													
PIC32MX675F512H	512 + 12	64	64	80	3	4	6	Y	Y	N	5/5/5	16 ch	2	5/1	1	Y	Y	
PIC32MX675F512L			100	4	5													
PIC32MX695F512H		128	64	80	3	4												
PIC32MX695F512L			100	4	5													
PIC32MX764F128H	128+12	32	64	80	3	4	4/6	Y	Y	1	5/5/5	16 ch	2	5/1	1	Y	Y	
PIC32MX764F128L			100	4	5													
PIC32MX775F256H	256 + 12	64	64	80	3	4	8/8	Y	Y	2	5/5/5	16 ch	2	5/1	1	Y	Y	
PIC32MX775F256L			100	4	5													
PIC32MX775F512H	512 + 12	64	64	80	3	4	6	Y	Y	2	5/5/5	16 ch	2	5/1	1	Y	Y	
PIC32MX775F512L			100	4	5													
PIC32MX795F512H		128	64	80	3	4												
PIC32MX795F512L			100	4	5													

Third-party Application Software and Hardware Support

- Ashling Microsystems
- AVIX-RT
- CMS Systems
- Digilent Inc.
- easyGUI
- eflightworks
- expresslogic
- Free RTOS
- Green Hills Software Inc.
- Lauterbach
- Macraigor Systems
- Micrium
- Micro/sys Inc.
- OLIMEX Ltd.
- Pumpkin
- RAMTEX International
- RoweBots Research Inc.
- SEGGER
- SparkFun Electronics
- TechToys Company

For up-to-date information about our 32-bit portfolio, related development tools and technical support, visit: www.microchip.com/PIC32

Support

Microchip is committed to supporting its customers in developing products faster and more efficiently. We maintain a worldwide network of field applications engineers and technical support ready to provide product and system assistance. In addition, the following service areas are available at www.microchip.com:

- **Support** link provides a way to get questions answered fast: <http://support.microchip.com>
- **Sample** link offers evaluation samples of any Microchip device: <http://sample.microchip.com>
- **Forum** link provides access to knowledge base and peer help: <http://forum.microchip.com>
- **Buy** link provides locations of Microchip Sales Channel Partners: www.microchip.com/sales

Sales Office Listing

AMERICAS

Atlanta

Tel: 678-957-9614

Boston

Tel: 774-760-0087

Chicago

Tel: 630-285-0071

Cleveland

Tel: 216-447-0464

Dallas

Tel: 972-818-7423

Detroit

Tel: 248-538-2250

Kokomo

Tel: 765-864-8360

Los Angeles

Tel: 949-462-9523

Santa Clara

Tel: 408-961-6444

Toronto

Mississauga, Ontario

Tel: 905-673-0699

EUROPE

Austria - Wels

Tel: 43-7242-2244-39

Denmark - Copenhagen

Tel: 45-4450-2828

France - Paris

Tel: 33-1-69-53-63-20

Germany - Munich

Tel: 49-89-627-144-0

Italy - Milan

Tel: 39-0331-742611

Netherlands - Drunen

Tel: 31-416-690399

Spain - Madrid

Tel: 34-91-708-08-90

UK - Wokingham

Tel: 44-118-921-5869

Training

If additional training interests you, then Microchip can help. We continue to expand our technical training options, offering a growing list of courses and in-depth curriculum locally, as well as significant online resources – whenever you want to use them.

- Regional Training Centers: www.microchip.com/rtc
- MASTERS Conferences: www.microchip.com/masters
- Worldwide Seminars: www.microchip.com/seminars
- eLearning: www.microchip.com/webseminars
- Resources from our Distribution and Third Party Partners www.microchip.com/training

ASIA/PACIFIC

Australia - Sydney

Tel: 61-2-9868-6733

China - Beijing

Tel: 86-10-8528-2100

China - Chengdu

Tel: 86-28-8665-5511

China - Hong Kong SAR

Tel: 852-2401-1200

China - Nanjing

Tel: 86-25-8473-2460

China - Qingdao

Tel: 86-532-8502-7355

China - Shanghai

Tel: 86-21-5407-5533

China - Shenyang

Tel: 86-24-2334-2829

China - Shenzhen

Tel: 86-755-8203-2660

China - Wuhan

Tel: 86-27-5980-5300

China - Xiamen

Tel: 86-592-2388138

China - Xian

Tel: 86-29-8833-7252

China - Zhuhai

Tel: 86-756-3210040

ASIA/PACIFIC

India - Bangalore

Tel: 91-80-3090-4444

India - New Delhi

Tel: 91-11-4160-8631

India - Pune

Tel: 91-20-2566-1512

Japan - Yokohama

Tel: 81-45-471- 6166

Korea - Daegu

Tel: 82-53-744-4301

Korea - Seoul

Tel: 82-2-554-7200

Malaysia - Kuala Lumpur

Tel: 60-3-6201-9857

Malaysia - Penang

Tel: 60-4-227-8870

Philippines - Manila

Tel: 63-2-634-9065

Singapore

Tel: 65-6334-8870

Taiwan - Hsin Chu

Tel: 886-3-6578-3000

Taiwan - Kaohsiung

Tel: 886-7-536-4818

Taiwan - Taipei

Tel: 886-2-2500-6610

Thailand - Bangkok

Tel: 66-2-694-1351

7/21/09

Microcontrollers • Digital Signal Controllers • Analog • Memory • Wireless

Information subject to change. The Microchip name and logo, the Microchip logo, MPLAB and PIC are registered trademarks of Microchip Technology Incorporated in the U.S.A. and other countries. The PIC32 logo, MiWi and REAL ICE are trademarks of Microchip Technology Incorporated in the U.S.A. and other countries. All other trademarks mentioned herein are property of their respective companies. © 2010, Microchip Technology Incorporated. All Rights Reserved. Printed in the U.S.A. 8/10 DS39904K



MICROCHIP
www.microchip.com

Microchip Technology Inc.
2355 W. Chandler Blvd.
Chandler, AZ 85224-6199